



InstaShare™ Button Solution User Manual

Copyright and Disclaimer

Copyright

Copyright © 2022 by BenQ Corporation. All rights reserved. No part of this publication may be reproduced, transmitted, transcribed, stored in a retrieval system or translated into any language or computer language, in any form or by any means, electronic, mechanical, magnetic, optical, chemical, manual or otherwise, without the prior written permission of BenQ Corporation.

Disclaimer

BenQ Corporation makes no representations or warranties, either expressed or implied, with respect to the contents hereof and specifically disclaims any warranties, merchantability or fitness for any particular purpose. Further, BenQ Corporation reserves the right to revise this publication and to make changes from time to time in the contents hereof without obligation of BenQ Corporation to notify any person of such revision or changes.

This user manual aims to provide the most updated and accurate information to customers, and thus all contents may be modified from time to time without prior notice. Please visit www.benq.com for the latest version of this manual.

The illustrations and the images in this guide are for your reference.

Table of contents

Copyright and Disclaimer	i
Introduction	1
Product features	2
Package contents	3
Product specifications	4
Overview	5
Button	5
LED indicator for the Button	5
Using InstaShare Button Solution	6
Connecting the wireless adapter	6
Pairing a Button to the wireless adapter	6
Pairing a Button to the wireless adapter through Wi-Fi	7
Pairing a Button to the wireless adapter through hotspot	9
Sharing your screen	12
Split-screen presentations	14
Sharing multiple screens	14
Maximize one window in split-screen mode	15
Touch back	16
Bring your own meeting (BYOM): Using a display's webcam, speakers, and microphone	17
Storing Buttons in the InstaShare Dock	18
Upgrading InstaShare Button firmware	19

Introduction

InstaShare Button Solution is a wireless screen sharing solution that allows users to display their notebooks or other personal devices to a presentation display without needing to install software or drivers.



- “InstaShare Button Solution” will hereinafter be referred to as “the product” in this document.
- “InstaShare Button/Buttons” will hereinafter be referred to as “Button”/“Buttons” in this document.
- “Wireless USB Adapter” will hereinafter be referred to as “wireless adapter” in this document.



Your product complies with local wireless regulations and the warranties are valid in the country/region where the product is purchased. Using the product outside the purchased country/region does not guarantee wireless functionality. Any modifications made to the product will void the warranties.

Product features

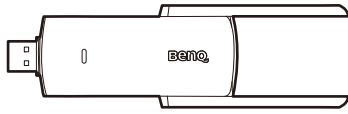
The product is equipped with the following features:

Features	Description
Plug & Play	Simply connect the product to the USB Type-C port, then press the present key to start screen sharing.
No Software and drivers	The product doesn't need any software or driver installation. Just plug and share with your Windows, macOS, Chrome, or any other devices with a full-featured USB Type-C port.
Smart split-screen	Up to nine users can simultaneously project their screen with InstaShare 2 . The layout of the screens will automatically adjust to the number of screens being shared.
Touch Back	You can control your personal device by tapping on the interactive display.
Wireless 802.11 ac/n	Better wireless connectivity for smooth presentations.
Ultra HD 4K Video	4K Ultra HD video with stereo sound.
Extended Desktop	Mirror or extend your desktop with Windows or OS X.

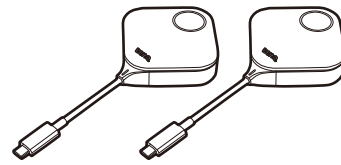


- Check which displays are compatible with InstaShare Button: Go to www.benq.com > search "TZY31"(model name) > check out the **Specifications** tab on the product page.
- Touch back is available on Windows & Mac.
- Transmission distance depends on many environmental factors. Stated transmission distance is based on direct line-of-sight.
- According to regulatory restrictions in different regions of the world, Wi-Fi channels cannot be used in countries outside the purchased region.

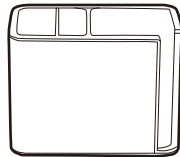
Package contents



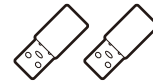
Wireless USB Adapter



InstaShare Buttons



InstaShare Dock



Type-C to Type-A USB Adapters



Quick Start Guide



Regulatory Statements



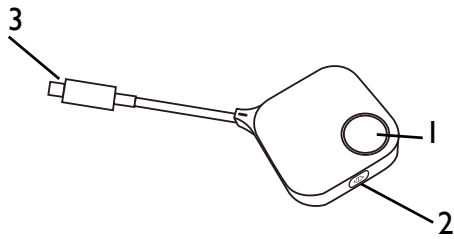
- Available accessories and the pictures shown here may differ from the actual contents and the product supplied for your region.
- Use original accessories to ensure compatibility.
- Always keep the product and accessories out of reach of children.

Product specifications

InstaShare Button (TWY31)	
Color	Silver
Wireless transmission frame rate (Casting mode)	Up to 60 FPS depending on environment (1080P 60FPS/4K 30FPS)
Wireless transmission frame rate (BYOM mode)	Up to 1080P 30 FPS depending on environment
Button input resolution (Casting mode)	Up to 4K 30 FPS
Button input resolution (BYOM mode)	Up to 720P 30 FPS
Audio rate	Stereo, Radio quality 16bits 48KHz
Wi-Fi standard	IEEE 802.11ac 5GHz, 2T2R MIMO
Authentication protocol	WiFi Standard
Simultaneous connections	9
Wireless security (encryption)	WPA2 Personal (WPA2-PSK)
Wireless range	Max. 15m (between Button and IFP)
Temperature range	Operating: 0°C to +40°C (+32°F to +104°F)
	Storage: -10°C to +60°C (+14°F to +140°F)
Humidity range	Operating: 10% to 80% relative humidity
	Storage: 5% to 90% relative humidity (non-condensing)
Cable	USB Type-C
Power supply	DC 5V±10%, Minimum 0.9A
Power consumption	Max 4.5W Full Loading
Dimensions (WxHxD)	67mm x 67mm x 23.2mm
Wireless USB Adapter (TDY31)	
Color	Black
Wi-Fi standard	802.11 a/b/g/n/ac
Interface	USB 3.0
Wi-Fi band	Dual Band 2.4GHz / 5GHz
MU-MIMO	Yes
Wi-Fi performance	2.4 GHz Band: up to 400 Mbps 5 GHz Band: up to 867 Mbps
External antennas	2
Supported OS	Android
Wireless range	Max. 15m (between Wireless Adapter and IFP)
Security	WPA-PSK/WPA2-PSK WPA/WPA2/WEP
Dimension (LxHxW)	137 x 41 x 12mm
Net weight	0.025 kg
Operation temperature	0°C – 40°C
Operation humidity	10% – 90%
Storage temperature	-40°C – 70°C
Storage humidity	5% – 90%
InstaShare Dock (TCY31)	
Color	Black
Dimension (LxHxW)	150 x 85 x 106 mm
Product material	PC+ABS & Aluminum alloy 6063 & Silica gel
Weight	420 g
InstaShare Button loading quantity	4 pcs

Overview


Button



1. **Present key with LED indicator**
Press to start or stop presenting.
2. **Full-screen key**
Press to toggle between enlarged view or regular view during split-screen presentations.
3. **USB Type-C connector**
Connect to a computer or laptop.

LED indicator for the Button

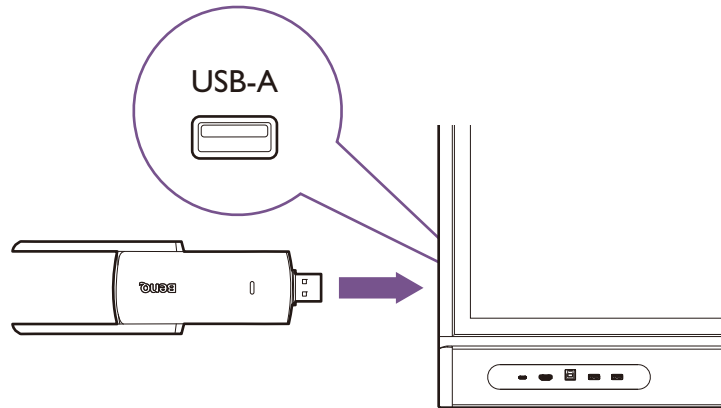
Please refer to the table below for detailed indicator and status descriptions for the Button.

LED Behavior	Status description
Off	Powered off
Solid white	Standby
Slow blinking white	Firmware upgrading.
Flashing green	<ul style="list-style-type: none">• Pairing with the display.• Connecting to the wireless adapter.
Solid green	Ready to present.
Slow blinking green	The Button is waiting for approval to present.  The InstaShare 2 app on BenQ smart displays allows you to require approval before a Button can begin presenting.
Solid blue	Presenting
Slow blinking blue	Unable to present (e.g. the display is in do-not-disturb mode, maximum number of presenters has been reached, etc).
Flashing red	Unable to connect to the wireless adapter.
Quick flashing red	The Button is not activated.
Solid red	USB Type-C port is not transmitting video data. The USB Type-C port on your device may not support ALT mode.

Using InstaShare Button Solution

Connecting the wireless adapter

To begin using InstaShare Button, you must first install the wireless adapter to a USB Type-A port on your display. It is recommended that you use a USB 3.0.

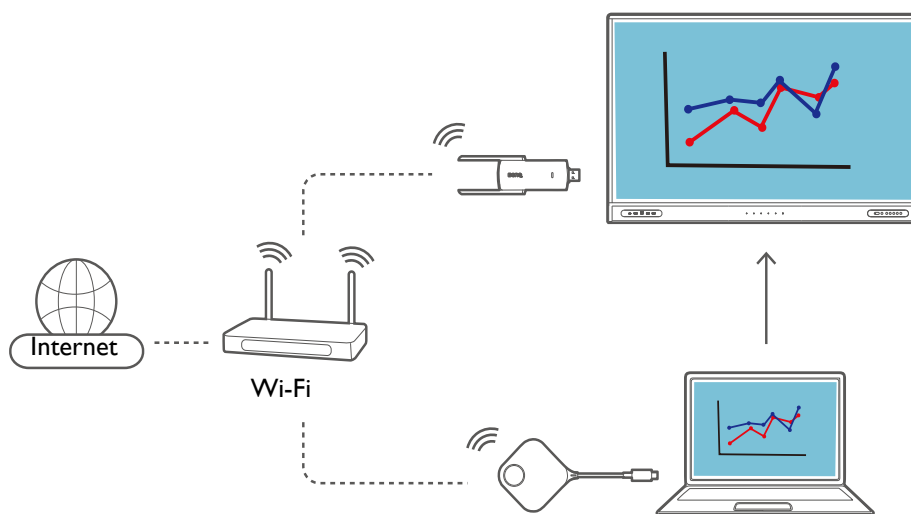


Pairing a Button to the wireless adapter

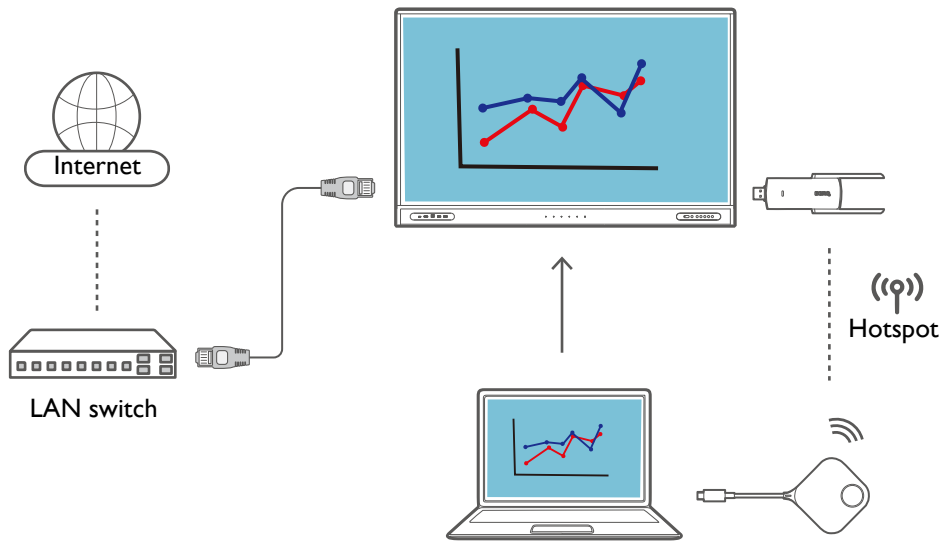
Depending on your Internet environment, you can pair your Button and wireless adapter through Wi-Fi or Hotspot mode.

Find the connection mode that best suits you:

A. Wifi mode: With a Wi-Fi router, you can connect your wireless adapter and Button to the same Wi-Fi to enjoy a stable casting experience. See [Pairing a Button to the wireless adapter through Wi-Fi](#) for details.

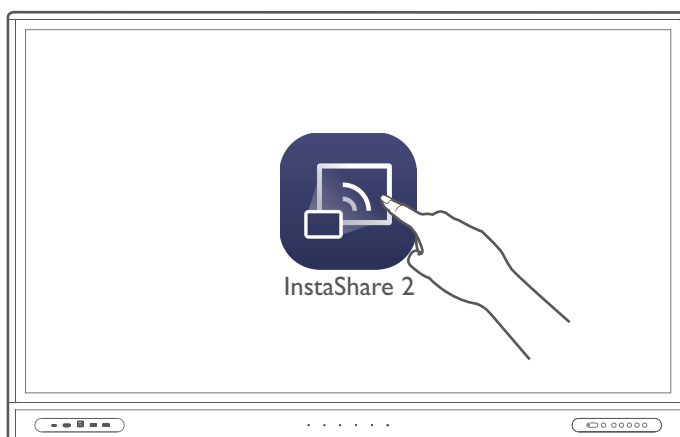


B. Hotspot mode: If your IFP is connected to the Internet via Ethernet, use Hotspot mode to link your button with the wireless adapter. See [Pairing a Button to the wireless adapter through hotspot](#) for details.

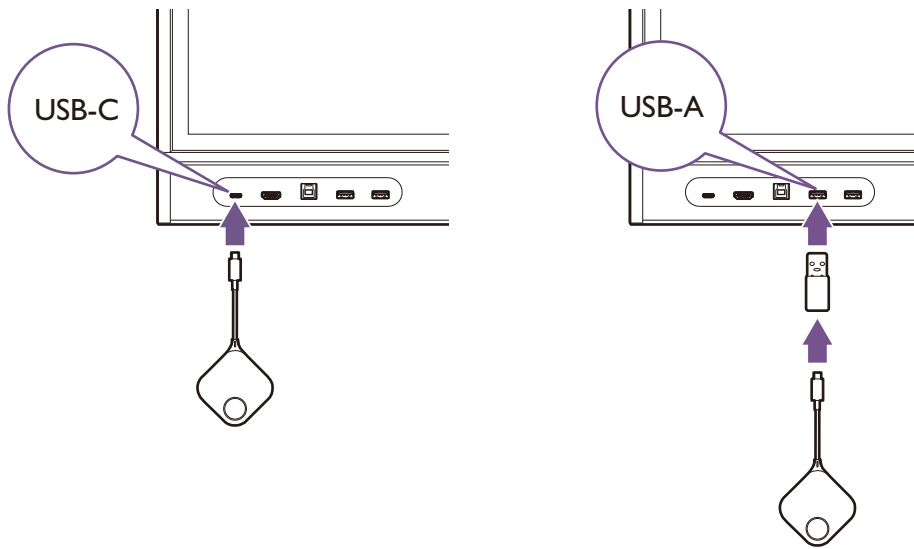



Pairing a Button to the wireless adapter through Wi-Fi

1. Ensure that the wireless adapter is connected to your display and that the display is powered on.
2. On the display, go to **Settings** (⚙️) > **Network** > **Wi-Fi**.
 - a. Touch the network's name to connect to the network.
 - b. Key in the Wi-Fi password and press **Connect**.
3. Launch the **InstaShare 2** app on the display.

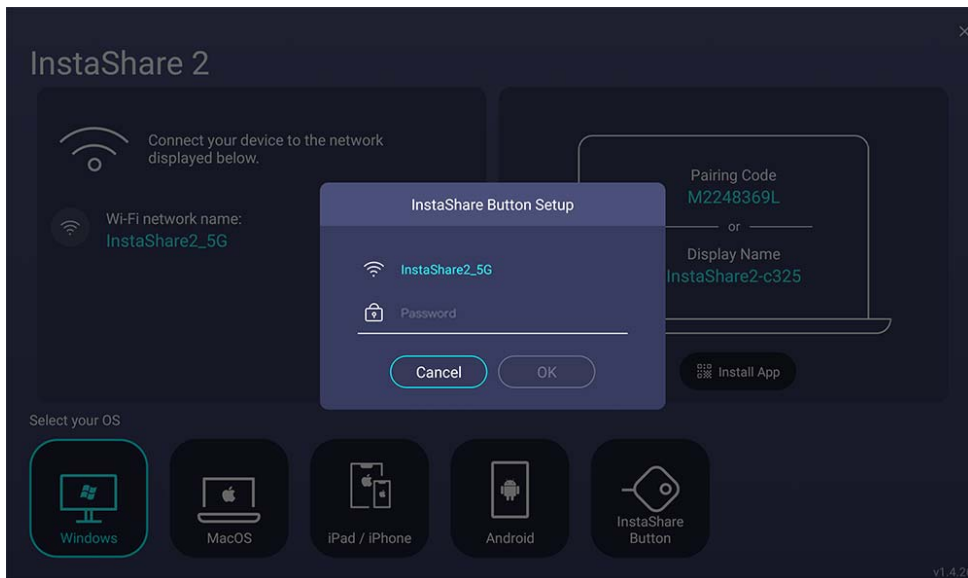


4. Connect a Button to either a USB Type-C port or USB Type-A port (using the supplied Type-C to Type-A USB adapter) on your display. A setup window will launch.



 RP02 series models and VC01A only support pairing through the USB Type-A port.

5. Key-in the Wi-Fi password again and tap **OK**.

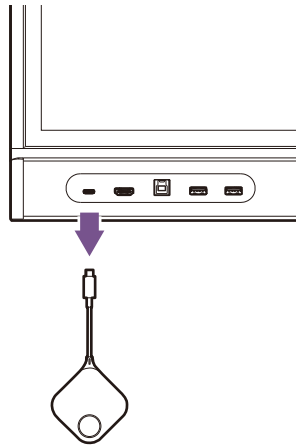


6. Specify a name for the Button, then tap **OK**.

- Once the pairing process is complete, a confirmation window will appear on the display and the LED on the Button will turn blue.



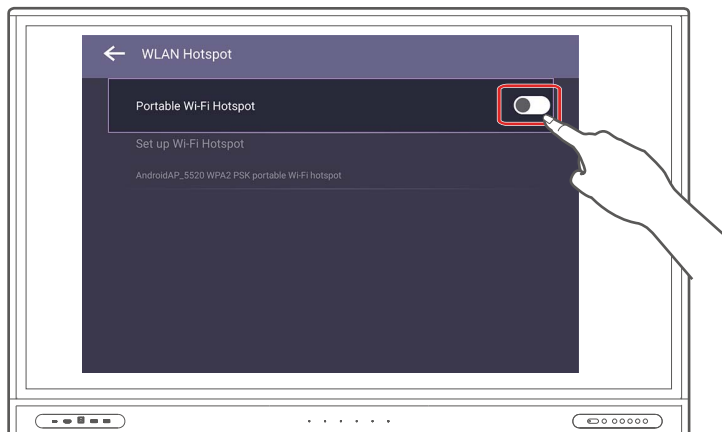
- Remove the Button from the display.



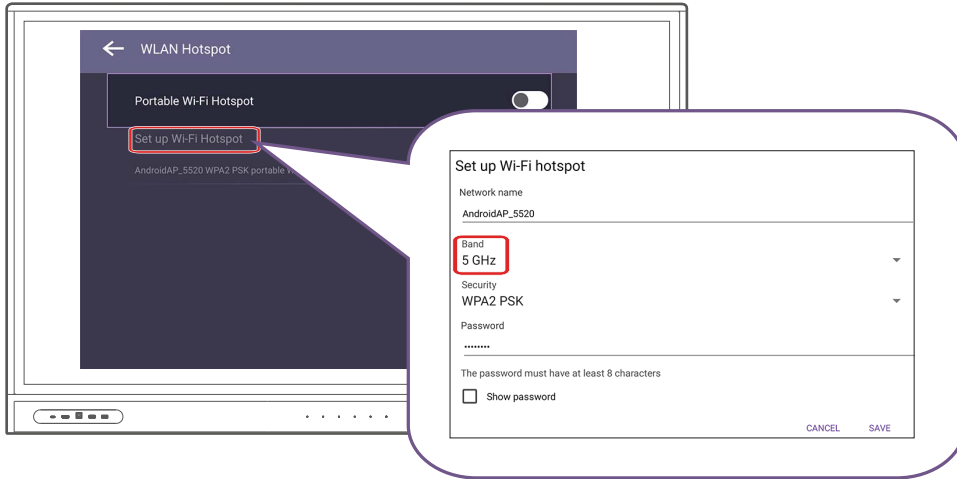
- Repeat the process for additional Buttons.

Pairing a Button to the wireless adapter through hotspot

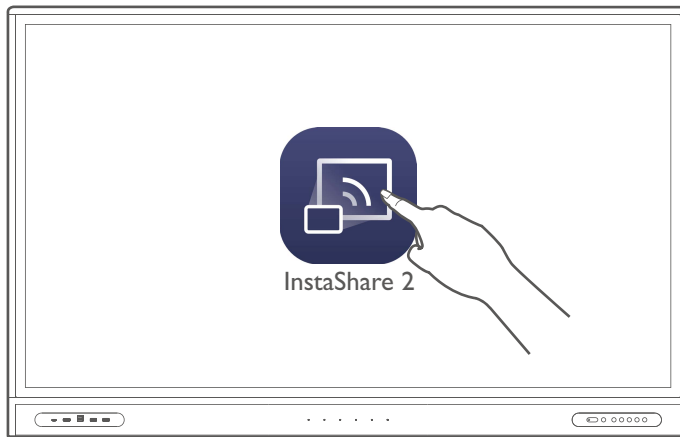
- Ensure that the wireless adapter is connected to your display and that the display is powered on.
- On the display, go to **Settings** (⚙️) > **Network** > **WLAN Hotspot** (📶).
 - Enable **Portable Wi-Fi Hotspot**.



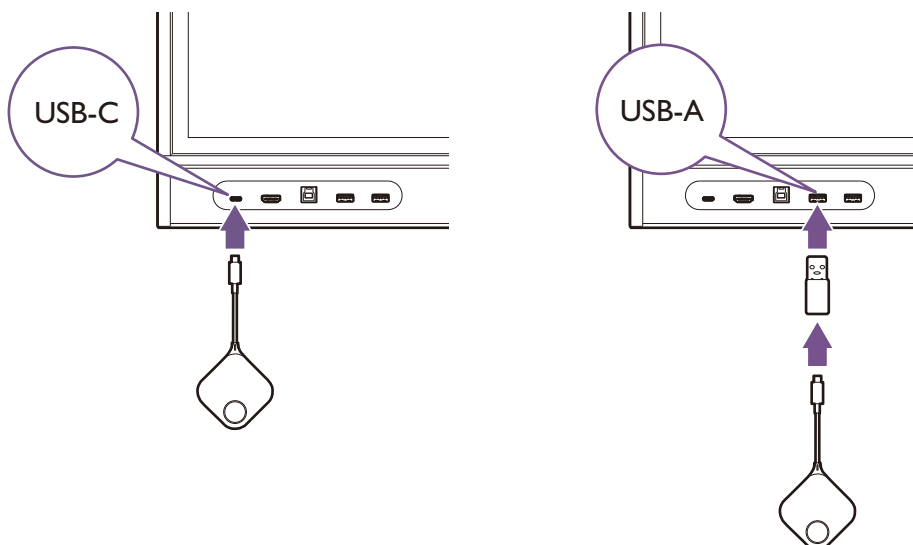
b. Tap **Set up Wi-Fi Hotspot**, then set **Band** to **5 GHz**.



3. Launch the **InstaShare 2** app on the display.



4. Connect a Button to either a USB Type-C port or USB Type-A port (using the supplied Type-C to Type-A USB adapter) on your display. A setup window will launch.

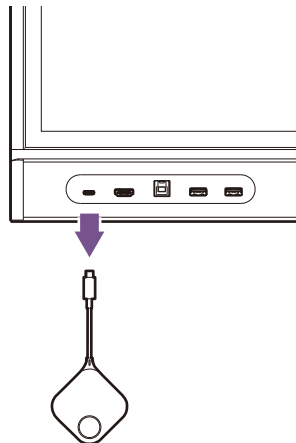


RP02 series models and VC01A only support pairing through the USB Type-A port.

5. Specify a name for the Button, then tap **OK**.
6. Once the pairing process is complete, a confirmation window will appear on the display and the LED on the Button will turn blue.



7. Remove the Button from the display.



8. Repeat the process for additional Buttons.

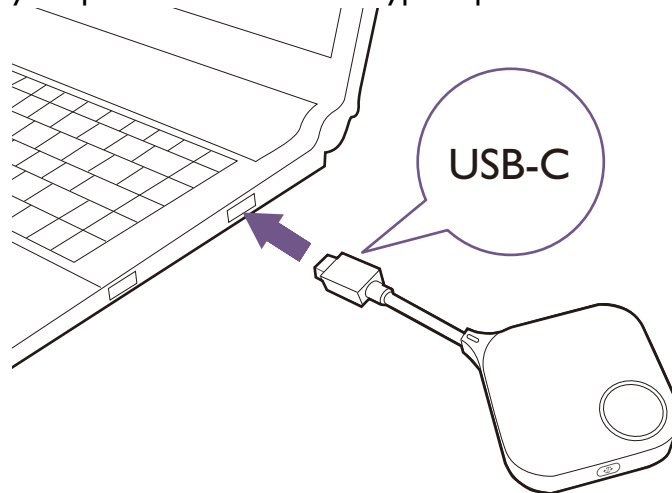
Sharing your screen



Ensure that your laptop supports video output and power delivery via USB Type-C port (Display Port Alternate Mode on USB Type-C).

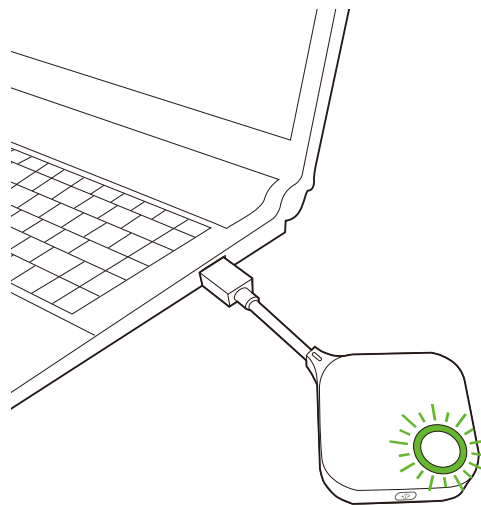
To start a presentation:

1. Insert a Button into your personal device's USB Type-C port.

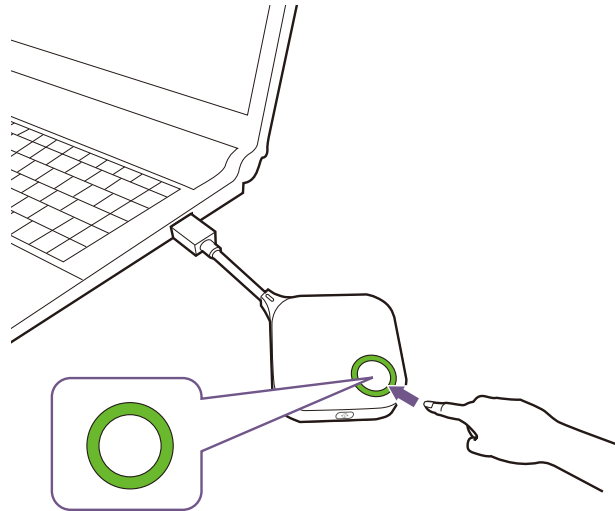


The Button will not work using the supplied Type-C-to-Type-A adapter. The adapter is only for the pairing process.

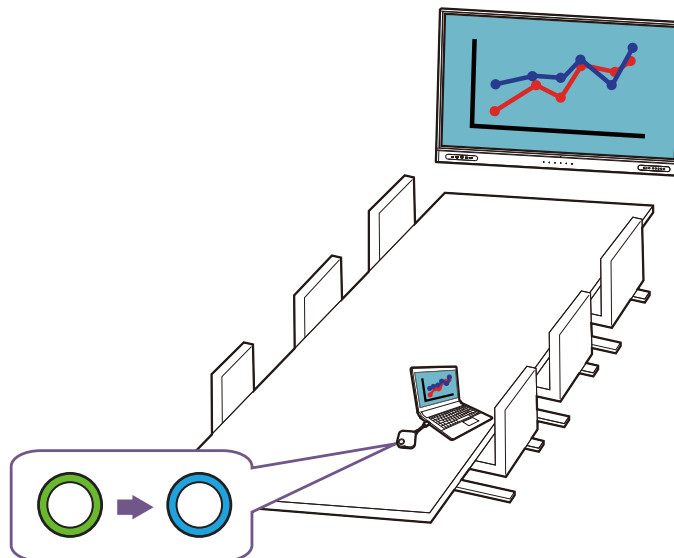
2. The LED on the Button will flash green for about 10 seconds.



3. When the LED turns solid green, press the present key to begin presenting.



Your personal device's screen will be shared on the BenQ smart display and the LED on the Button will turn solid blue.



- Make sure the transmission distance between the Button and wireless adapter is within 15 m and with no obstacles in between.
- The product supports MacBooks and Windows laptops to mirror an extended desktop.

Split-screen presentations

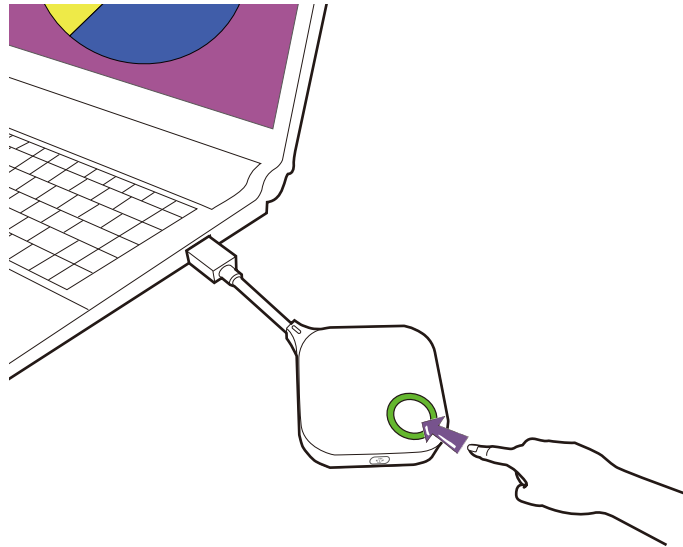
The product allows up to nine users to present simultaneously in a split-screen mode.

Sharing multiple screens



Ensure that all Buttons have already been paired to the wireless adapter connected to the display. See [Pairing a Button to the wireless adapter on page 6](#) for more information.

1. Press the present key on the Button to start sharing your screen. See [Sharing your screen on page 12](#) for detailed steps.



2. Repeat step 1 for additional screens to be shared. InstaShare 2 will automatically switch to split-screen mode.



The layout of the split-screen presentation will be dictated by the amount of users in the presentation.

Maximize one window in split-screen mode

Users can maximize their screen by pressing the full-screen key on the Button.



To return to the split-screen presentation, press the full-screen key again.

Touch back

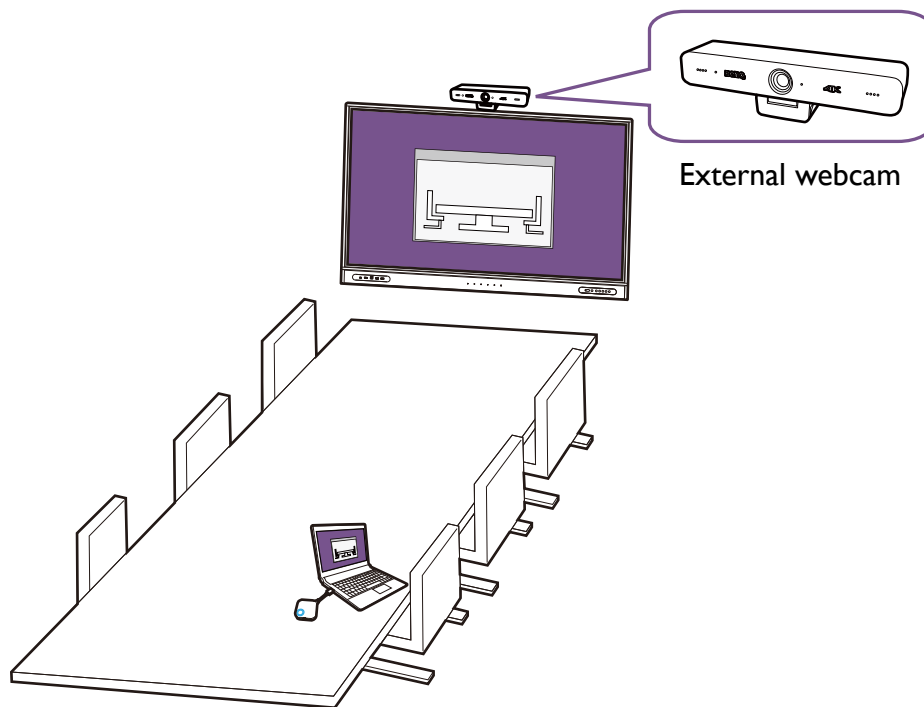
To use touchback, simply tap on the BenQ smart display to control the connected PC.



Touchback is only available on Mac & Windows PCs and is not supported during multi-screen sharing.

Bring your own meeting (BYOM): Using a display's webcam, speakers, and microphone

When a Button is connected to a device and presenting, the device will also be able to make use of any combination of the display's speakers, microphone, or webcam (connected externally) in the programs/applications it is running. This feature gives users the ability when using video software to easily switch between the audio/video channels of either their device or the display based on what is suitable for their setting, without the need for any further physical connections or additional installation processes.

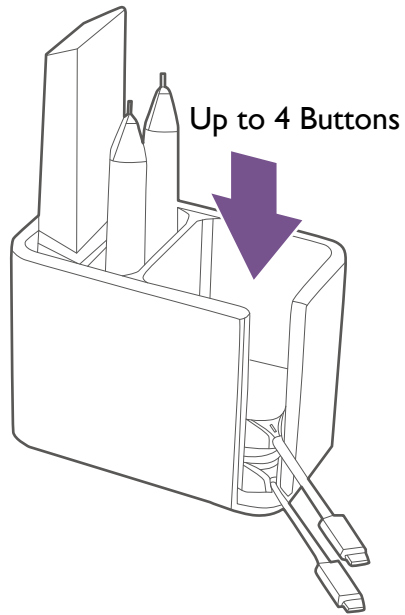


Think of a situation in which a group of meeting participants gather in a conference room that features a large BenQ touchscreen display. In this scenario a participant running a video conferencing app can connect an already paired Button to his or her notebook PC and begin a presentation to share the video conference with all other participants in the room. Once presenting, the user can then switch the video input for the app over to the display's external webcam and both the audio input and output to the microphone and speakers of the display respectively.

This setup allows the video conferencing app to capture views and voices from of all the participants in the conference room as well as broadcast the audio on the display's more powerful speakers so that the whole room is able to hear, thereby removing the need for each participant to individually log into the video conference themselves.

Storing Buttons in the InstaShare Dock

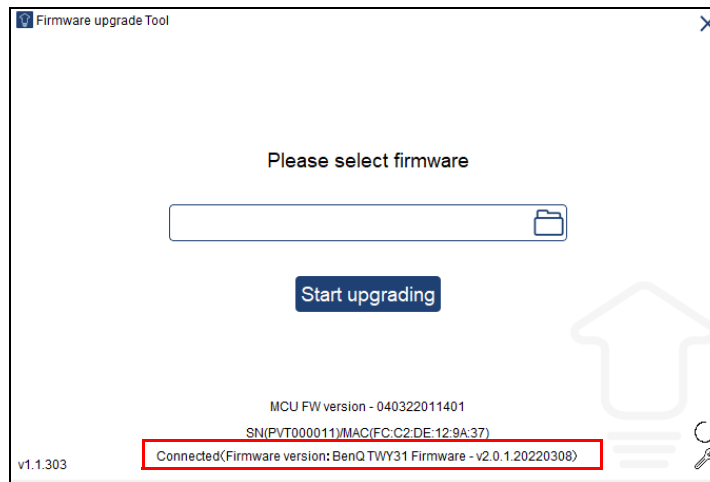
You can store up to four Buttons in the InstaShare Dock along with additional accessories such as styluses and remote control.



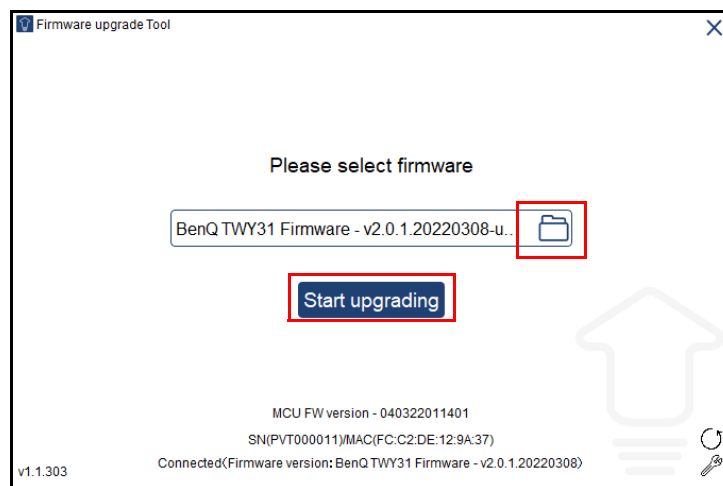
Upgrading InstaShare Button firmware

Users may contact BenQ support to get the latest firmware upgrade tool and firmware package.

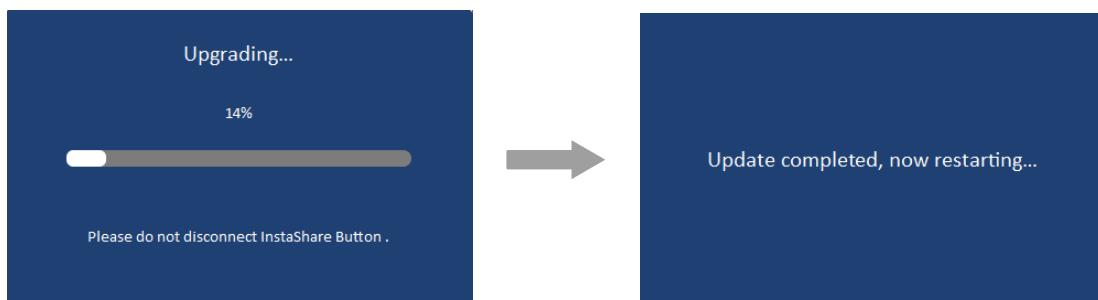
1. Run the firmware upgrade tool (`EShareUpdateTool_v1.1.303.exe`) on a Windows device.
2. Insert the Button into the laptop's USB Type-C port. A message with the button's current firmware version will appear.



3. Select the firmware package (do not unzip) and click **Start upgrading**.



4. A window will appear stating that the firmware has successfully updated and will not restart.



5. Remove and re-connect the Button to your laptop to verify the updated firmware version.